

Top Class Amenities

# Club CLASS LIVING





Prerna Rajvi  
**ALPINES**

3 & 4 BHK **Sky Living**

New Standards in **Sky Living...**

Promising **Top Class Amenities...**

Assuring **Club Class Living.**





A WHOLE NEW CLASS...

# Club Class

Prerna Rajvi  
**ALPINES**

3 & 4 BHK **Sky Living**

Two of the most distinguished players in the Real Estate field join hands to create a new Benchmark in Ultramodern Residential Apartments... at **REALISTIC PRICES !**

**Prerna Infrabuild Ltd. & Shivam Builders Pvt. Ltd.** present a unique Community Living for like minded people with its **3 & 4 BHK Ultramodern Club Class Apartments** advocating **Sky Living**.

Call it an Apartment, Home, Personal Retreat or a new milestone of life. Designed on a plush scale, **Prerna Rajvi Alpines** integrate an **Extremely Contemporary Design** with some never before **Features & Amenities** in its genre.

**Prerna Rajvi Alpines** is a manifestation of accommodating **Urban Lifestyles** coupled with **Architectural Adroitness**.

**This unique venture shall be one of the most epic examples of how One plus One can be a lot more than just Two.**





# Ground Floor Plan



# First Floor Plan





## Second Floor Plan



## Typical Floor Plan





# 14<sup>th</sup> Floor Plan



# Terrace Floor Plan





Purna Rajvi  
**ALPINES**  
3 & 4 BHK Sky Living



Multi Level  
**Garden**



## 3 BHK - Type 1A



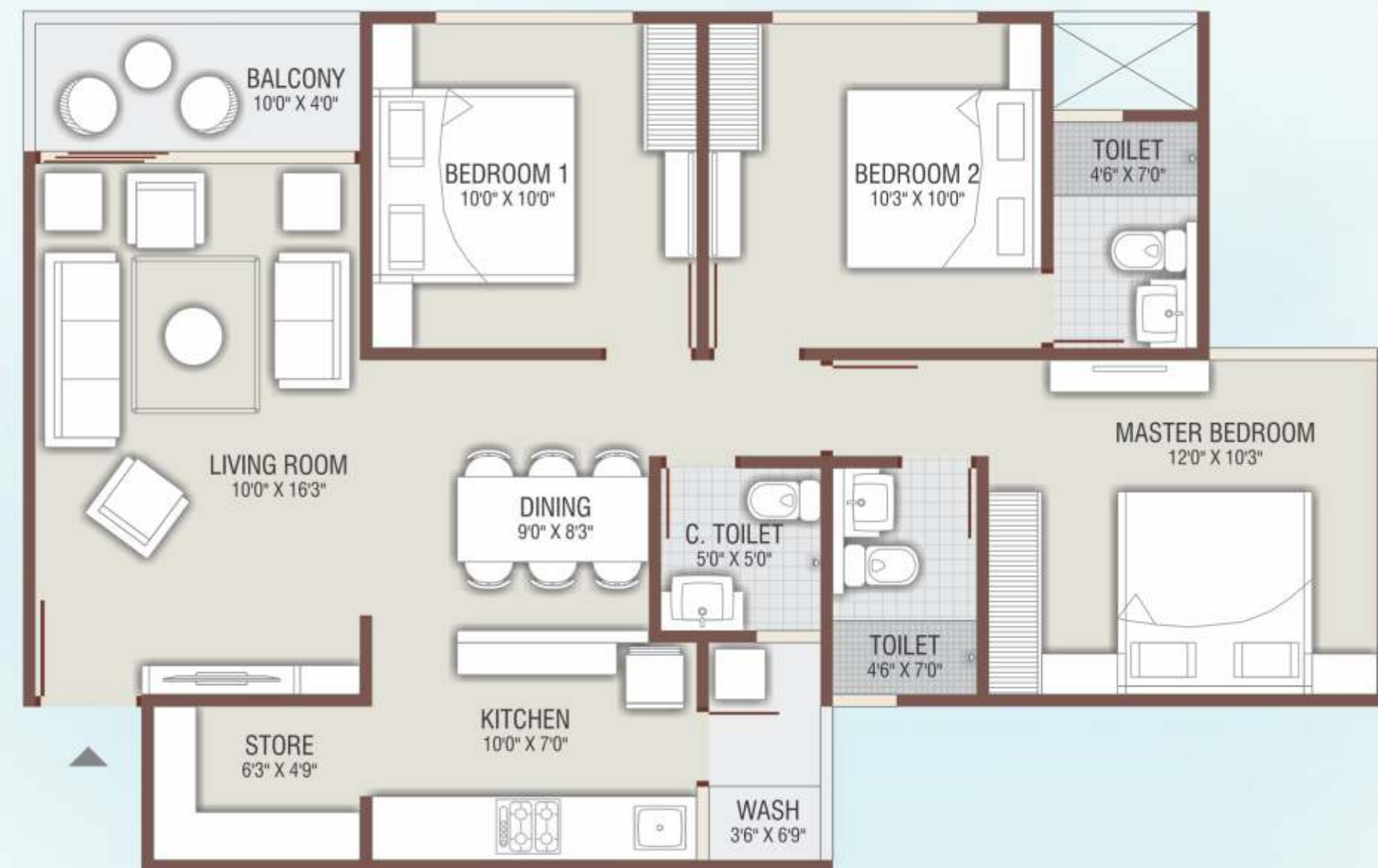
1590 sq. ft. (SBA)

Block: D - 1, 2, 3, 4  
Block: E - 3, 4





### 3 BHK - Type 1B



1560 sq. ft. (SBA)

Block: B - 1, 2  
Block: C - 3, 4





# 3 BHK - Type 1C



1585 sq. ft. (SBA)

Block: C - 1, 2





# 3 BHK - Type 2A



1710 sq. ft. (SBA)

Block: A - 1, 2, 3, 4  
Block: E - 1, 2





### 3 BHK - Type 2B



1675 sq. ft. (SBA)

Block: B - 3, 4







Prerna Rajvi  
**ALPINES**  
3 & 4 BHK Sky Living

Recreation and  
Entertainment  
facilities for the  
Entire Family.



### 4 BHK - Type 3A



2435 sq. ft. (SBA)

Block: A - 2, 3  
Block: E - 2

### 4 BHK - Type 3B



2315 sq. ft. (SBA)

Block: D - 2, 3  
Block: E - 3



Purna Rajvi  
**ALPINES**  
3 & 4 BHK Sky Living



**First & Second Basement Floor Plan**





Top Class Amenities

# Club Class Living



## Luxury Living Redefined



- |  |   |   |
|--|---|---|
|  Roof Top Garden                |  Indoor / Outdoor Children Play Area |  Ultra Modern Home Theatre         |
|  Fully Equipped Party Area      |  Table Tennis & Board Games          |  Kids Gaming Zone                  |
|  Gym with High-end Equipments |  Jogging Track                     |  Mobile App for Service Support  |
|  Library                      |  Vastu Based Planning              |  Video Door Phone & Intercom     |
|  Jacuzzi, Steam and Sauna     |  Vehicle Free Zone                 |  Yoga & Meditation Room          |
|  Swimming Pool                |  Billiards Room                    |  Senior Citizen Seating & Gazebo |





## FEATURES THAT SPELL CLASS.

## FACILITIES THAT STAND APART.



**Flooring**  
Vitrified Tiles in Drawing, Dining, Kitchen & Bedrooms.



**Doors**  
Flush Doors with S.S. Fittings and Paint.  
Main Door - Polished Natural Veneer / Laminate.



**Windows**  
Sliding Epoxy / Powder Coated Aluminium Section Windows with Mosquito Protective Net.



**Kitchen**  
Granite Platform with Designer Glazed Tiles upto Lintel Level and S.S. Sink.



**Electrification**  
3 Phase concealed ISI Copper Wiring with Standard quality switches.



**Wall Finish**  
Internal Plaster with Putty Finish.  
External Double Coat Plaster / Texture with Acrylic Paint.



**Toilet & Plumbing**  
Ceramic Glazed Tiles upto Lintel Level. Premium Plumbing Fittings and Accessories.



**Security System**  
24 X 7 recruited Security Staff within the campus & Intercom facilities.



**Elevators**  
Automatic Elevators of a reputed brand.



**Parking**  
Car and Two Wheeler Parking in Basement & Ground Level.



**Structure**  
Structural Design for seismic conditions as per regulations and codes.



**Special Features**  
Large window size for better air ventilation. Spacious area planning that suits modern interior concepts.

### Notes:

- AMC / AEC / Legal charges extra. All Present / Future Government Charges / Taxes extra.
- PLC (Preferential Location Charges) will be extra.
- Maintenance Deposit - To maintain building & common services, Monthly Maintenance Charges & Maintenance Deposit to be paid as decided by the Society/Developer before possession.
- This brochure is just for easy presentation of the project and should not be treated as a legal document.

- Due to unavoidable circumstances of non availability of Raw Materials / Labour / Electric Connection, if possession is delayed, then Member support is required.
- All the Information & Plans mentioned inside this brochure are for our project 'Prerna Rajvi Alpines' and it is proposed to concerned authorities for approvals.



Prerna Tirth  
Jain Derasar  
& Upashray



Doctor House



Prerna Arcade



Prerna Viraj 2



Prerna Arbour



### Inspiring Prerna

Prerna Infrabuild Ltd. is a renowned icon of the Real-Estate and Infrastructure fraternity of Gujarat, having a vibrant legacy of successfully accomplishing several Residential and Commercial spaces. Prerna Infrabuild Ltd. is a BSE listed company, with Mr. Vijay Shah as its Chairman and Mr. Sanket Shah as the Managing Director, whose combined leadership and visionary initiatives have made Prerna, a true sign of Trust, Transparency & Supremacy in the Real Estate field.

Apart from owning the credit of some of the finest Commercial and Residential projects; Quality, Commitment, Elegance and Excellence are few words Prerna has always been known for. Doctor House, Prerna Tirth and Prerna Viraj are few of many such projects that have become Landmarks of Ahmedabad city.

Rajvi Arcade



Rajvi Sapphire



Rajvi Oasis



Rajvi Emerald

Raj Plaza



### Spectacular Shivam

Seeded in 1989 as a real estate development company in Gujarat; Shivam Builders has been a remarkable epitome of quality, customer centric approach, robust engineering, uncompromising business ethics, timeless values and transparency in all spheres of business conduct.

Shivam Builders have come a long way, building an incredible volume of properties which is a reflection of their deep passion, trust, commitment and expertise. Set ashore towards the horizon of prosperity, Shivam Builders' exclusive trail of success shot off by the name 'Rajvi'. Today, Rajvi has flourished into a synonym for 360 degree solutions in real estate. The saga of magnificent residential & commercial projects includes Rajvi Complex, Rajvi Towers, Rajvi Pearl, Rajvi Aurum, Rajvi Garnet & many more.

The visionary leadership of Mr. Shailesh Patel (Chairman) & Mr. Kinjal Patel (Managing Director) has enabled Shivam Builders in making it one of the most preferred names in the real estate sector, all over Gujarat.





# Prerna Rajvi ALPINES

3 & 4 BHK Sky Living

Site: Between Helmet & AEC Cross Roads, Next to IOC Petrol Pump,  
132 ft Ring Road, Naranpura, Ahmedabad - 380013

Contact: +91-9925042924, 9925008188

www.shivamprerna.com | info@shivamprerna.com

Developed by:

## Shivam Prerna Infrabuild



Shivam  
Builders  
Pvt. Ltd.  
Since 1989  
ISO 9001:2008

1<sup>st</sup> Floor, Rajvi Arcade, Opp. Gurukul, Drive in Road,  
Memnagar, Ahmedabad - 380052  
Ph.: +91 79 2747 9453 / 54

E: info@shivambuilders.in | W: www.shivambuilders.in



Prerna  
Infrabuild  
Limited

Survey No.820/1, In lane of Panchwati Auto, Opp. to Honest Restaurant,  
(Circle P Building, Prahladnagar), S.G.Road, Makarba, Ahmedabad - 380058  
M: +91 9925008128 / 88

E: info@prernagroup.com | W: www.prernagroup.com

Architect:



Structural Consultant:



Member of:

